



DILATOFLEX[®] KT

EXPANSION JOINTS with floating flanges and tie rods

P.E.D. 97/23/CE Cat. III

CC
Green label

GZ
Orange label

EPC
Cream label

YP
Yellow label

AR / CN
Red label

AB
Grey label

F1
White label

DW
Blue label

TE
Mauve label

PTFE liner

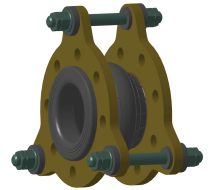
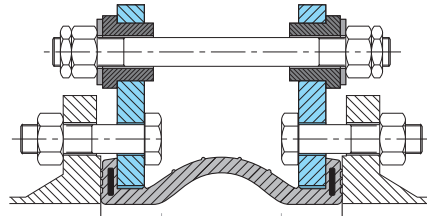


Inner
lining
grades

**For these products
please consult us.**

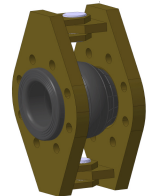
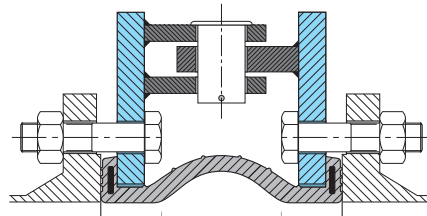
Tie rods to limit axial elongation

Allowing
small lateral movement
and reduce vibration



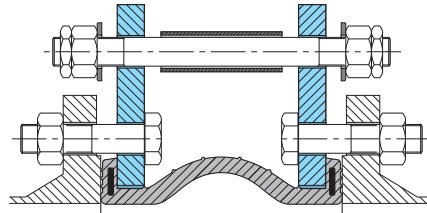
Hinge system

Allowing
angular movements



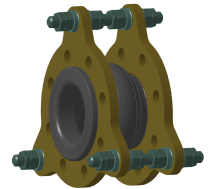
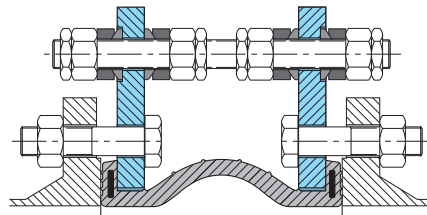
Tie rods to limit axial movements

Allowing both
compression and elongation.



Tie rods with inner and outer restraints

Allowing
lateral movement



Example of Label



Technical Sheet
AI-TS- 008/3 from 2014 - 04 - 03

We reserve the right to change our products' specifications when necessary without notice.